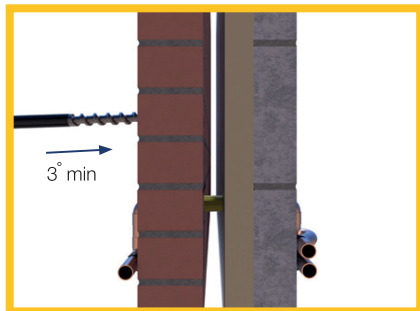




User Instructions



#WORKINGSMARTER



Step 1:

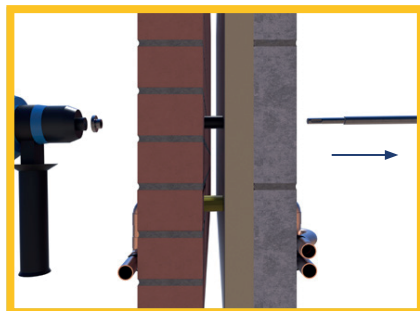
Prepare to drill upwards at a minimum angle of 3°.

Note: When drilling from the outside, angle the drill at a minimum of 3° upwards to prevent moisture/water travelling along the extrusion and leaking into the property.



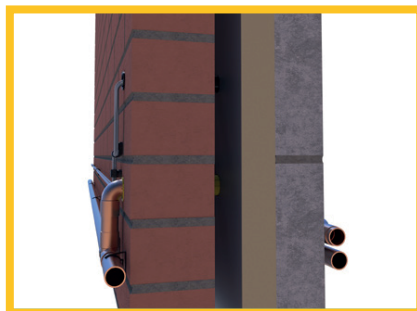
Step 2:

Drill through the wall in seconds. When drilling through damp masonry, retract the drill to clear spoil.



Step 3:

Once through the wall, disconnect the drill bit and pull through from the inside, leaving a neat sleeve in the wall.



Complete:

Easily thread cable or piping through the sleeve within seconds.