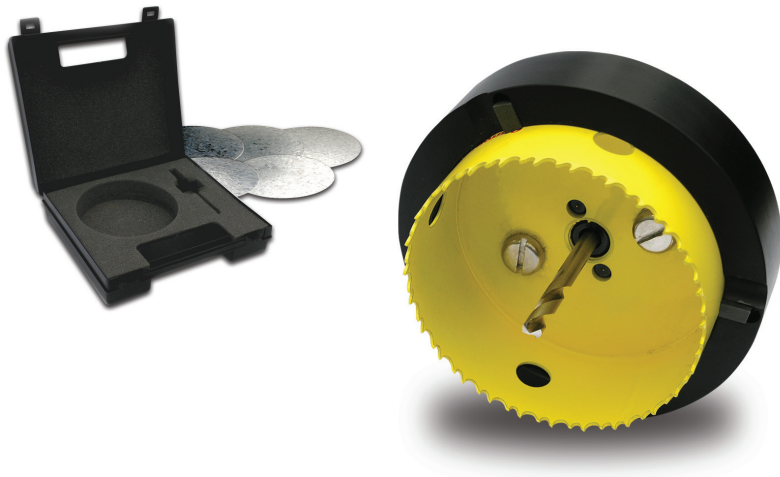


Cavity Master **CRCA1**

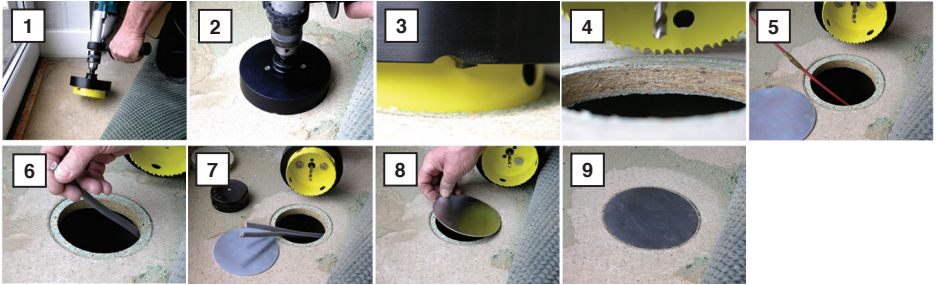


CONTENTS:

- 1 x Cavity Master
- 1 x Arbour and Drill
- 5 x Solid Plates

Extra Enclosure Plates, Solid Coated or Plaster Board Mesh are available in packs of five.

OPERATING INSTRUCTIONS



WARNING!

Failure to operate the tool according to safety instructions could result in injury or tool breakage

As easy as 1,2,3.....4,5,6,7,8,9!!!

- 1: Attach Cavity Master to drill. Using drill bit, locate and centre Cavity Master over worksite.
- 2: Start to drill slowly at first, ensuring you keep the drill upright.
- 3: Cavity Master features a patented rebate stop, so no need to worry about over drilling.
- 4: Once the hole is drilled remove Cavity Master.
- 5: Using Cable Rod, retrieve or install cable as necessary.
- 6: The hole produced is easily large enough to access the void.
- 7: Pull through cable and connect/feed as desired.
- 8: Choose appropriate plate, apply silicon and insert into rebate.
- 9: Job Done!